

megaband® Cable Ladder

Length 3m.



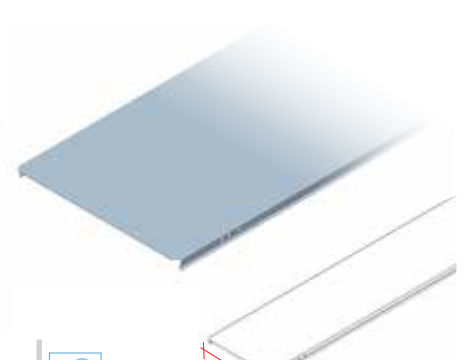
megaband® Cable Ladder

Length 6m.



Cover

Straight Cover for megaband® Cable Ladder



Integrated Coupler System for depths 60, 85, 100 and 120. Length of ladder sections 3m.



Integrated Coupler System for depths 60, 85, 100 and 120. Length of ladder sections 6m.



Click Fit (no screws or fasteners). The cover remains fixed even in a vertical position.

RANGE	DIM. AXB	megaband® Cable Ladder		megaband® Cable Ladder		Cover megaband®	
		H.D.G.*		H.D.G.*		H.D.G.*	
		Reference	Pack Unit	Reference	Pack Unit	Reference	Pack Unit
Standard Light Duty	60x100	92032100	3	92132100	6	73031100	24
	60x150	92032150	3	92132150	6	73031150	12
	60x200	92032200	3	92132200	6	73031200	12
	60x300	92032300	3	92132300	6	73031300	6
	60x400	92032400	3	92132400	6	73031400	6
	60x450	92032450	3	92132400	6	73031450	6
	60x500	92032500	3	92132500	6	73031500	6
	60x600	92032600	3	92132600	6	73031600	6
	60x700	92032700	3(*)	92132700	6(*)	73031700	6(*)
	60x800	92032800	3(*)	92132800	6(*)	73031800	4(*)
	60x900	92032900	3(*)	92132900	6(*)	73031900	4(*)
	60x1000	92032990	3(*)	92132990	6(*)	73031990	4(*)
	85x100	92033100	3	92133100	6	73031100	24
	85x200	92033200	3	92133200	6	73031200	12
	85x300	92033300	3	92133300	6	73031300	6
	85x400	92033400	3	92133400	6	73031400	6
	85x500	92033500	3	92133500	6	73031500	6
	85x600	92033600	3	92133600	6	73031600	6
	85x700	92033700	3(*)	92133700	6(*)	73031700	6(*)
	85x800	92033800	3(*)	92133800	6(*)	73031800	4(*)
85x900	92033900	3(*)	92133900	6(*)	73031900	4(*)	
85x1000	92033990	3(*)	92133990	6(*)	73031990	4(*)	
Medium Duty	100x100	92034100	3	92134100	6	73031100	24
	100x150	92034150	3	92134100	6	73031150	12
	100x200	92034200	3	92134200	6	73031200	12
	100x300	92034300	3	92134300	6	73031300	6
	100x400	92034400	3	92134400	6	73031400	6
	100x450	92034450	3	92134400	6	73031450	6
	100x500	92034500	3	92134500	6	73031500	6
	100x600	92034600	3	92134600	6	73031600	6
	100x700	92034700	3(*)	92134700	6(*)	73031700	6(*)
	100x750	92034750	3(*)	92134700	6(*)	73031750	4(*)
	100x800	92034800	3(*)	92134800	6(*)	73031800	4(*)
	100x900	92034900	3(*)	92134900	6(*)	73031900	4(*)
	100x1000	92034990	3(*)	92134990	6(*)	73031990	4(*)
	Heavy Duty	120x100	92035100	3	92135100	6	73031100
120x150		92035150	3	92135150	6	73031150	12
120x200		92035200	3	92135200	6	73031200	12
120x300		92035300	3	92135300	6	73031300	6
120x400		92035400	3	92135400	6	73031400	6
120x450		92035450	3	92135450	6	73031450	6
120x500		92035500	3	92135500	6	73031500	6
120x600		92035600	3	92135600	6	73031600	6
120x700		92035700	3(*)	92135700	6(*)	73031700	6(*)
120x750		92035750	3(*)	92135750	6(*)	73031750	4(*)
120x800		92035800	3(*)	92135800	6(*)	73031800	4(*)
120x900		92035900	3(*)	92135900	6(*)	73031900	4(*)
120x1000		92035990	3(*)	92135990	6(*)	73031990	4(*)

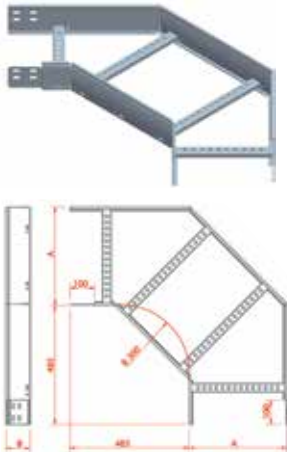
Also available, to order, in other widths and depths. Bycro finish, Electro galvanised, stainless steel 304 and 316L available on request.

(*) Consult for minimum quantities and pack units.

(*) The hot dip galvanized finish is NOT AN ACCURATE AESTHETIC FINISH. It is a very effective corrosion protection. COLOUR DIFFERENCES CAN OCCUR (shades of grey), brightness and surface finish (roughness, smoothness), created during the process employed. This is normal and does NOT AFFECT THE QUALITY AND DURATION OF THE ANTI-CORROSION PROTECTION.

90° Bend megaband®

For cable ladder

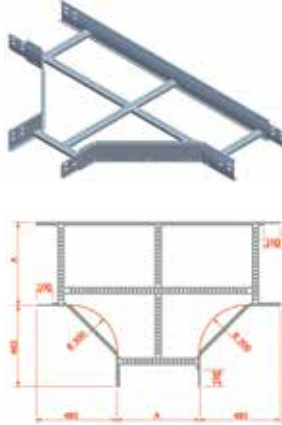


NEW

Integrated Coupler System for depths 60, 85, 100 and 120.

Tee megaband®

For cable ladder

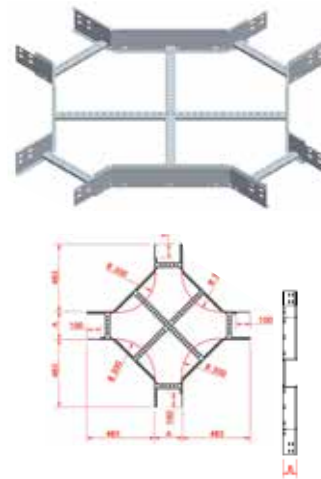


NEW

Integrated Coupler System for depths 60, 85, 100 and 120.

Crossover megaband®

For cable ladder



NEW

Integrated Coupler System for depths 60, 85, 100 and 120.

M.M. AxB CLICK NEW	90° Bend megaband®	Tee megaband®	Crossover megaband®	Pack Unit
	H.D.G.*	H.D.G.*	H.D.G.*	
	Reference	Reference	Reference	
60x100	93032100	93132100	93232100	Each
60x150	93032150	93132150	93232150	Each
60x200	93032200	93132200	93232200	Each
60x300	93032300	93132300	93232300	Each
60x400	93032400	93132400	93232400	Each
60x450	93032450	93132450	93232450	Each
60x500	93032500	93132500	93232500	Each
60x600	93032600	93132600	93232600	Each
60x700	93032700	93132700	93232700	Each(*)
60x800	93032800	93132800	93232800	Each(*)
60x900	93032900	93132900	93232900	Each(*)
60x1000	93032990	93132990	93232990	Each(*)
85x100	93033100	93133100	93233100	Each
85x200	93033200	93133200	93233200	Each
85x300	93033300	93133300	93233300	Each
85x400	93033400	93133400	93233400	Each
85x500	93033500	93133500	93233500	Each
85x600	93033600	93133600	93233600	Each
85x700	93033700	93133700	93233700	Each(*)
85x800	93033800	93133800	93233800	Each(*)
85x900	93033900	93133900	93233900	Each(*)
85x1000	93033990	93133990	93233990	Each(*)
100x100	93034100	93134100	93234100	Each
100x150	93034150	93134150	93234150	Each
100x200	93034200	93134200	93234200	Each
100x300	93034300	93134300	93234300	Each
100x400	93034400	93134400	93234400	Each
100x450	93034450	93134450	93234450	Each
100x500	93034500	93134500	93234500	Each
100x600	93034600	93134600	93234600	Each
100x700	93034700	93134700	93234700	Each(*)
100x750	93034750	93134750	93234750	Each(*)
100x800	93034800	93134800	93234800	Each(*)
100x900	93034900	93134900	93234900	Each(*)
100x1000	93034990	93134990	93234990	Each(*)
120x100	93035100	93135100	93235100	Each
120x150	93035150	93135150	93235150	Each
120x200	93035200	93135200	93235200	Each
120x300	93035300	93135300	93235300	Each
120x400	93035400	93135400	93235400	Each
120x450	93035450	93135450	93235450	Each
120x500	93035500	93135500	93235500	Each
120x600	93035600	93135600	93235600	Each
120x700	93035700	93135700	93235700	Each(*)
120x750	93035750	93135750	93235750	Each(*)
120x800	93035800	93135800	93235800	Each(*)
120x900	93035900	93135900	93235900	Each(*)
120x1000	93035990	93135990	93235990	Each(*)

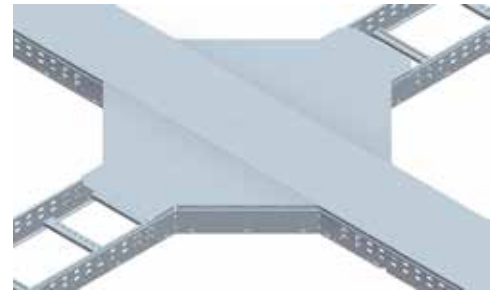
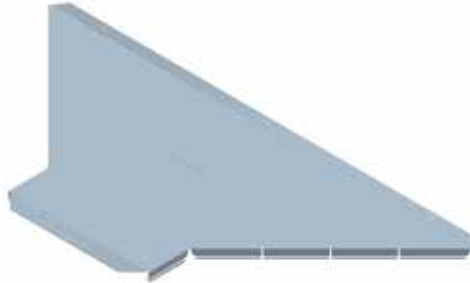
Also available to order in other widths, depths, angles and Radius.

(*) Consult pack units.

90° Bend Cover megaband®

Tee Cover megaband®

Crossover Cover megaband®



Click cover requires no additional fixings.



Click cover requires no additional fixings.



The megaband crossover cover is made up from 2 megaband tee covers connected to the straight cover.

DIM. AXB	90° Bend Cover megaband®		Tee Cover megaband®		Crossover Cover megaband®		Pack Unit
	H.D.G.*	Reference	H.D.G.*	Reference	H.D.G.*	Reference	
60x100		94030100		94130100		94130100	Each
60x150		94030150		94130150		94130150	Each
60x200		94030200		94130200		94130200	Each
60x300		94030300		94130300		94130300	Each
60x400		94030400		94130400		94130400	Each
60x450		94030450		94130450		94130450	Each
60x500		94030500		94130500		94130500	Each
60x600		94030600		94130600		94130600	Each
60x700		94030700		94130700		94130700	Each(*)
60x800		94030800		94130800		94130800	Each(*)
60x900		94030900		94130900		94130900	Each(*)
60x1000		94030990		94130990		94130990	Each(*)
85x100		94030100		94130100		94130100	Each
85x200		94030200		94130200		94130200	Each
85x300		94030300		94130300		94130300	Each
85x400		94030400		94130400		94130400	Each
85x500		94030500		94130500		94130500	Each
85x600		94030600		94130600		94130600	Each
85x700		94030700		94130700		94130700	Each(*)
85x800		94030800		94130800		94130800	Each(*)
85x900		94030900		94130900		94130900	Each(*)
85x1000		94030990		94130990		94130990	Each(*)
100x100		94030100		94130100		94130100	Each
100x150		94030150		94130150		94130150	Each
100x200		94030200		94130200		94130200	Each
100x300		94030300		94130300		94130300	Each
100x400		94030400		94130400		94130400	Each
100x450		94030450		94130450		94130450	Each
100x500		94030500		94130500		94130500	Each
100x600		94030600		94130600		94130600	Each
100x700		94030700		94130700		94130700	Each(*)
100x750		94030750		94130750		94130750	Each(*)
100x800		94030800		94130800		94130800	Each(*)
100x900		94030900		94130900		94130900	Each(*)
100x1000		94030990		94130990		94130990	Each(*)
120x100		94030100		94130100		94130100	Each
120x150		94030150		94130150		94130150	Each
120x200		94030200		94130200		94130200	Each
120x300		94030300		94130300		94130300	Each
120x400		94030400		94130400		94130400	Each
120x450		94030450		94130450		94130450	Each
120x500		94030500		94130500		94130500	Each
120x600		94030600		94130600		94130600	Each
120x700		94030700		94130700		94130700	Each(*)
120x750		94030750		94130750		94130750	Each(*)
120x800		94030800		94130800		94130800	Each(*)
120x900		94030900		94130900		94130900	Each(*)
120x1000		94030990		94130990		94130990	Each(*)

(*) Consult pack units.

(*) The hot dip galvanized finish is NOT AN ACCURATE AESTHETIC FINISH. It is a very effective corrosion protection. COLOUR DIFFERENCES CAN OCCUR (shades of grey), brightness and surface finish (roughness, smoothness), created during the process employed. This is normal and does NOT AFFECT THE QUALITY AND DURATION OF THE ANTI-CORROSION PROTECTION.

90° Inside Riser **megaband**[®]



90° Outside Riser **megaband**[®]



Articulated Riser Section



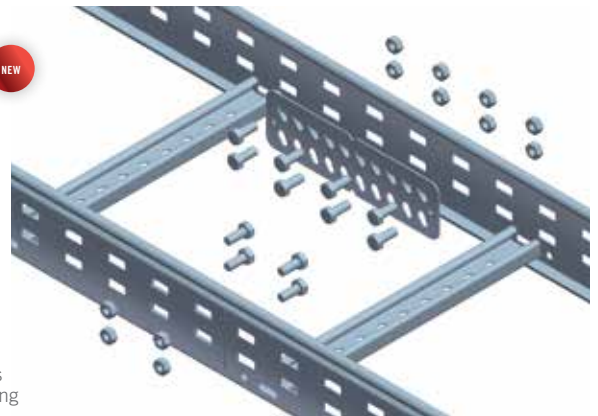
Contents: Unit consists of one straight section with two rungs. (Illustration shows 3 units joined together)

DIM. AxB	90° Inside Riser megaband [®]		90° Outside Riser megaband [®]		Articulated Riser Section		Pack Unit
	H.D.G.*	Reference	H.D.G.*	Reference	H.D.G.*	Reference	
60x100		93532100		93632100		93432100	Each
60x150		93532150		93632150		93432150	Each
60x200		93532200		93632200		93432200	Each
60x300		93532300		93632300		93432300	Each
60x400		93532400		93632400		93432400	Each
60x450		93532450		93632450		93432450	Each
60x500		93532500		93632500		93432500	Each
60x600		93532600		93632600		93432600	Each
60x700		93532700		93632700			Each(*)
60x800		93532800		93632800			Each(*)
60x900		93532900		93632900			Each(*)
60x1000		93532990		93632990			Each(*)
85x100		93533100		93633100		93433100	Each
85x200		93533200		93633200		93433200	Each
85x300		93533300		93633300		93433300	Each
85x400		93533400		93633400		93433400	Each
85x500		93533500		93633500		93433500	Each
85x600		93533600		93633600		93433600	Each
85x700		93533700		93633700			Each(*)
85x800		93533800		93633800			Each(*)
85x900		93533900		93633900			Each(*)
85x1000		93533990		93633990			Each(*)
100x100		93534100		93634100		93434100	Each
100x150		93534150		93634150		93434150	Each
100x200		93534200		93634200		93434200	Each
100x300		93534300		93634300		93434300	Each
100x400		93534400		93634400		93434400	Each
100x450		93534450		93634450		93434450	Each
100x500		93534500		93634500		93434500	Each
100x600		93534600		93634600		93434600	Each
100x700		93534700		93634700			Each(*)
100x750		93534750		93634750			Each(*)
100x800		93534800		93634800			Each(*)
100x900		93534900		93634900			Each(*)
100x1000		93534990		93634990			Each(*)
120x100		93535100		93635100		93435100	Each
120x150		93535150		93635150		93435150	Each
120x200		93535200		93635200		93435200	Each
120x300		93535300		93635300		93435300	Each
120x400		93535400		93635400		93435400	Each
120x450		93535450		93635450		93435450	Each
120x500		93535500		93635500		93435500	Each
120x600		93535600		93635600		93435600	Each
120x700		93535700		93635700			Each(*)
120x750		93535750		93635750			Each(*)
120x800		93535800		93635800			Each(*)
120x900		93535900		93635900			Each(*)
120x1000		93535990		93635990			Each(*)

Coupler



DIM	Coupler	
	H.D.G.*	Pack Unit
	Reference	
60	93930002	50
85/120	93930003	50
60	93930002/10	10
85/120	93930003/10	10



- Straight Coupler for use when full lengths have been cut.
- The full length sections have integrated couplers therefore no other couplers are required for joining them.
- Couplers connect with M8 nuts and bolts (page 27).

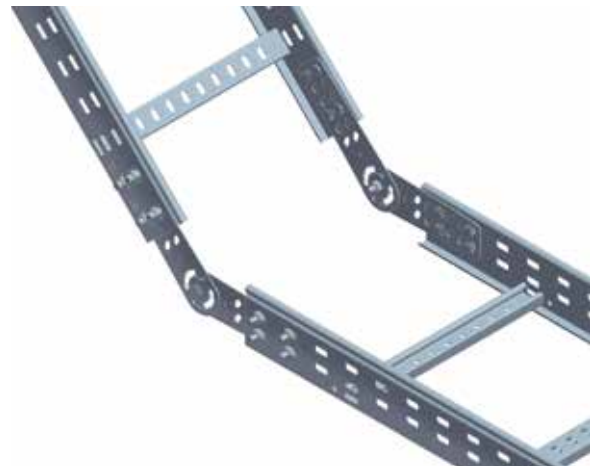
Riser/Dropper



DIM	Riser/Dropper	
	H.D.G.*	Pack Unit
	Reference	
60	93930012	8
85/120	93930013	8



- For creating risers and droppers with adjustable angles.
- Connect with M8 nuts and bolts (page 27).
- For Articulated Riser see page 26.



megaband® Hold down Clamp



Hold Down Clamp	
H.D.G.*	Pack Unit
Reference	
93930021	50



- Clamp for horizontal fastening of the ladder to Channel, RPLUS Brackets or Heavy Duty Pendant.
- Connect with M8 nuts and bolts (page 27).
- Support requires two clamps.



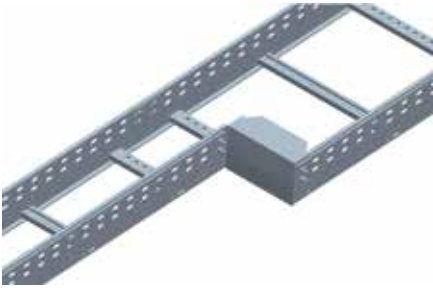
Megaband Joint Kit M8



DIM	Megaband Joint Kit M8	
	H.D.G.*	Pack Unit
	Reference	
M8x15	67030094	100

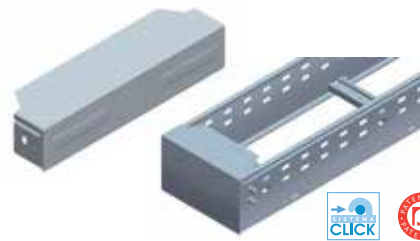
(*) The hot dip galvanized finish is NOT AN ACCURATE AESTHETIC FINISH. It is a very effective corrosion protection. COLOUR DIFFERENCES CAN OCCUR (shades of grey), brightness and surface finish (roughness, smoothness), created during the process employed. This is normal and does NOT AFFECT THE QUALITY AND DURATION OF THE ANTI-CORROSION PROTECTION.

Reducer



Please ask for availability of other sizes.

End Cover



megaband® accessory for terminating the end of the ladder.
Promotes total protection of the whole section.
Other sizes available. Please ask.

DIM. AxB	Reducer megaband®		End Cover megaband®		Pack Unit
	H.D.G.*		H.D.G.*		
	Reference		Reference		
150x60	71032015		70039215		1
300x60	71032030		70039230		1
450x60	71032045		70039245		1
600x60	71032060		70039260		1
150x100	71034015		70039415		1
300x100	71034030		70039430		1
450x100	71034045		70039445		1
600x100	71034060		70039460		1
150x120	71035015		70039515		1
300x120	71035030		70039530		1
450x120	71035045		70039545		1
600x120	71035060		70039560		1

megaband® Luminaire and Box Support



Luminaire and Box support **megaband®**

H.D.G.*	Pack Unit
Reference	
93930005	5

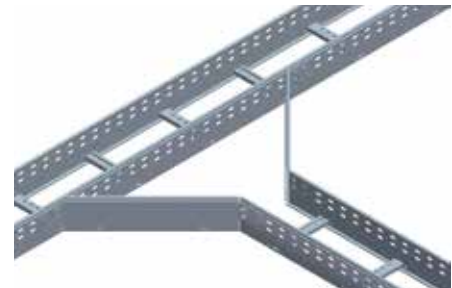


Side Connector



DIM	Side Connector	
	H.D.G.*	Pack Unit
	Reference	
60	93930202	1
100	93930204	1
120	93930205	1

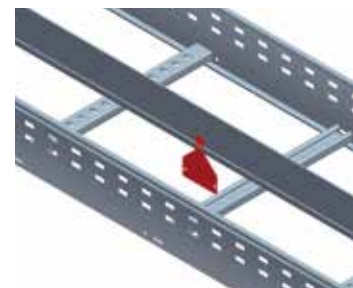
Contents: Unit consists of two pieces.



Click Divider



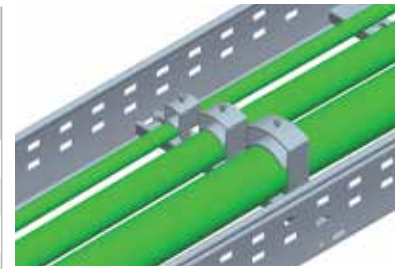
DIM	Click Divider	
	H.D.G.*	Pack Unit
	Reference	
25	67030610	20
50	67030611	16
80	67030612	12



Metal Cable Clamp



Cable Diameter	Metal Cable Clamp		Cable Diameter	Metal Cable Clamp		Pack Unit
	H.D.G.*	Reference		H.D.G.*	Reference	
DN10		93930110	DN45		93930145	Each
DN15		93930115	DN50		93930150	Each
DN20		93930120	DN60		93930160	Each
DN25		93930125	DN70		93930170	Each
DN32		93930132	DN80		93930180	Each
DN40		93930140	DN90		93930190	Each



- Suitable for correct fixing of cables directly to the rungs of the ladder.
- Especially suitable for vertical installations.

rejiband® megaband® Coupler



rejiband® megaband® Coupler



H.D.G.*	Pack Unit
Reference	70130200
	Each

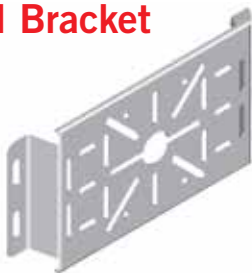


Contents: Each package contains 2 parts. One for each side.

- Designed for joining straight sections of **megaband®** and **rejiband®**
- Connect with M8 nuts and bolts (page 27).



Universal Bracket



Universal Bracket



H.D.G.*	Pack Unit
Reference	70430911
	10

- For installing boxes use M5 bolts.



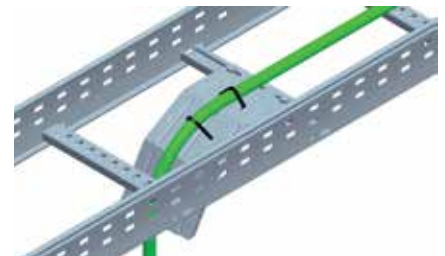
Cable Outlet megaband®



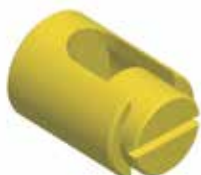
Cable Outlet megaband®



H.D.G.*	Pack Unit
Reference	93930004
	Each

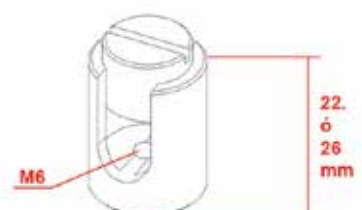


Earth Terminal



Earth Terminal		Pack Unit
Cables (mm²)	Reference	
16-50mm²	68000034	20
50-110mm²	68000035	20

- Material: Brass.



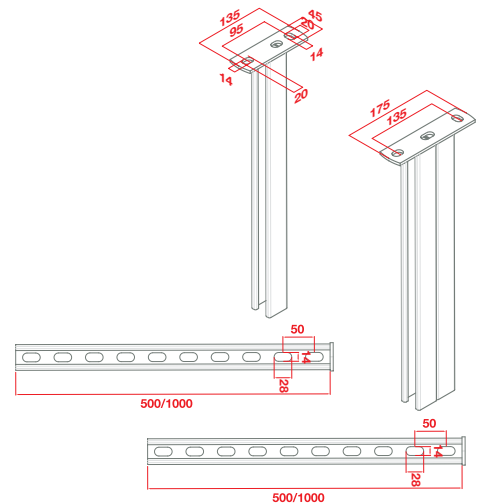
(*) The hot dip galvanized finish is NOT AN ACCURATE AESTHETIC FINISH. It is a very effective corrosion protection. COLOUR DIFFERENCES CAN OCCUR (shades of grey), brightness and surface finish (roughness, smoothness), created during the process employed. This is normal and does NOT AFFECT THE QUALITY AND DURATION OF THE ANTI-CORROSION PROTECTION.

Heavy Duty Pendant Drop

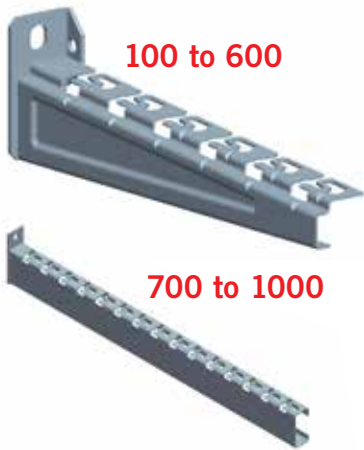


DIM	Heavy Duty Pendant Drop 41x41	Double Heavy Duty Pendant Drop 41x41	Pack Unit
	H.D.G.*	H.D.G.*	
	Reference	Reference	
500	67030660	67030662	Each
1000	67030661	67030663	Each

• For further product information see page 46.



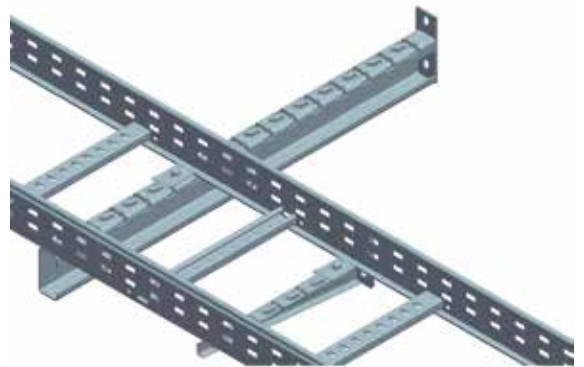
Medium Duty Cantilever RPLUS



DIM	Medium Duty Cantilever RPLUS		Pack Unit
	H.D.G.*		
	Reference		
100	62035103	Each	
150	62035153	Each	
200	62035203	Each	
300	62035303	Each	
400	62035403	Each	
500	62035503	Each	
600	62035603	Each	
700	62035703	Each	
750	62035753	Each	
800	62035803	Each	
900	62035903	Each	
1000	62035993	Each	

Pack unit: 4

- Universal, therefore 50% reduction in references required.
- Compatible with **megaband®**, **rejoband®**, sheet metal and PVC trays.
- Patented.



Heavy Duty Cantilever RPLUS



DIM	Heavy Duty Cantilever RPLUS		Pack Unit
	H.D.G.*		
	Reference		
300	63033303	Each	
400	63033403	Each	
500	63033503	Each	
600	63033603	Each	

Pack unit: 4

- Reinforced support for increased loads.



E90 RPLUS Connector

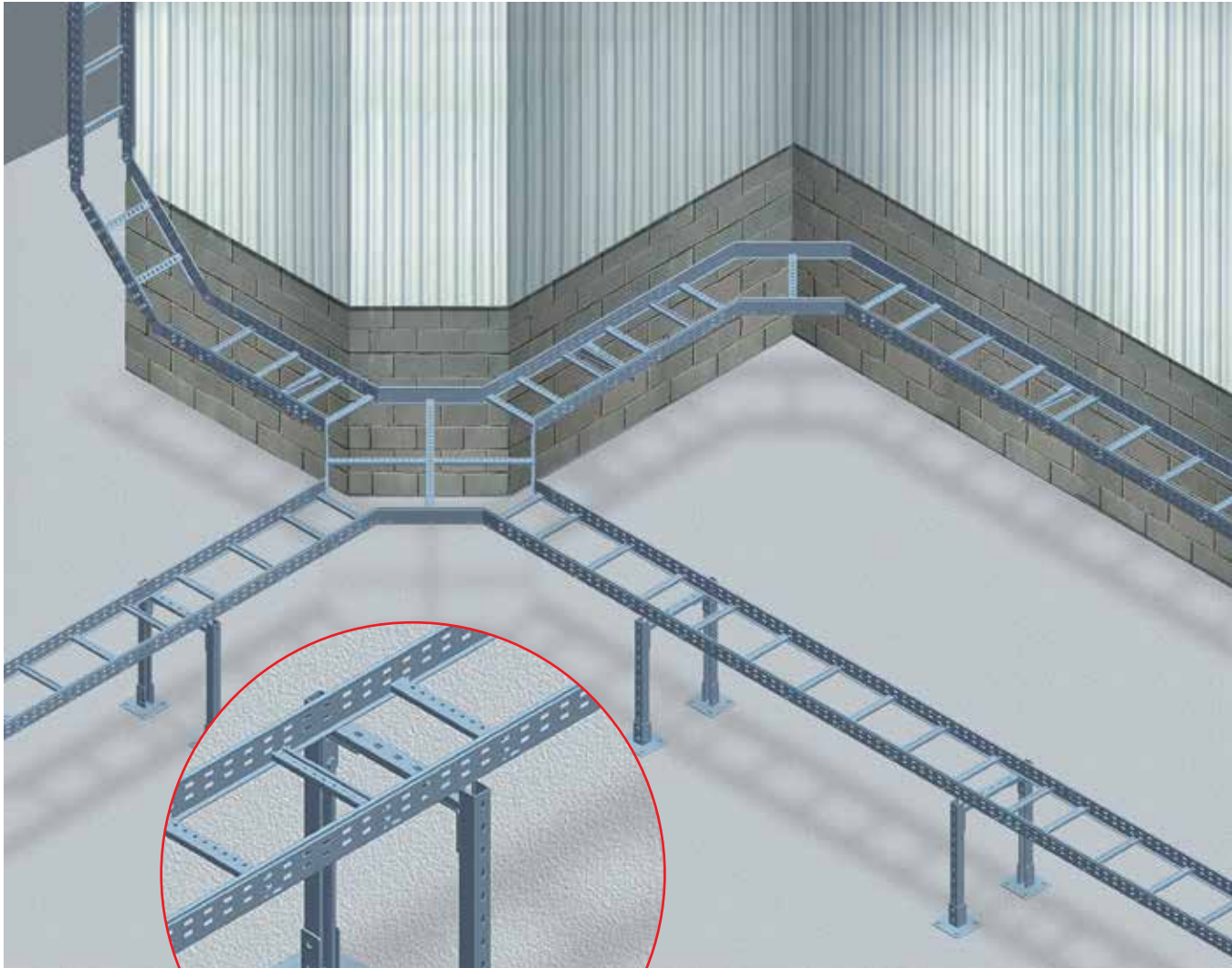


E90 RPLUS Connector		Pack Unit
H.D.G.*		
Reference		
62035001		15

- Necessary and unique component to create an E90 support.
- Allows the connection of the rod to ceiling or wall and RPlus bracket.
- For more information see E90 in Product Solution pages 58 to 65.

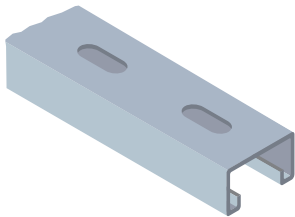


Channel and accessories for the support structure of **megaband®** Cable Ladder

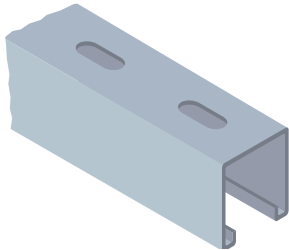


pemsa has a wide range of channels, supports and accessories to assist in the installation of **megaband®** Cable Ladder in any design and construction.

Heavy duty channel 41x21



Heavy duty channel 41x41



Channel floor boss 41x41



90° Tee Bracket No.16



INFORMATION: For more information on Channels and accessories see pages 47 to 51.

Bycro / E.B. Electrolytic Bichromate BS-EN ISO 2081
E.G. Electrogalvanised BS-EN ISO 2081, available on request

P.G. Pre-galvanised BS-EN 10346
H.D.G. Hot-dip galvanised BS-EN-ISO 1461

S.S. 304 Passivated stainless steel AISI 304
S.S. 316 Passivated stainless steel AISI 316