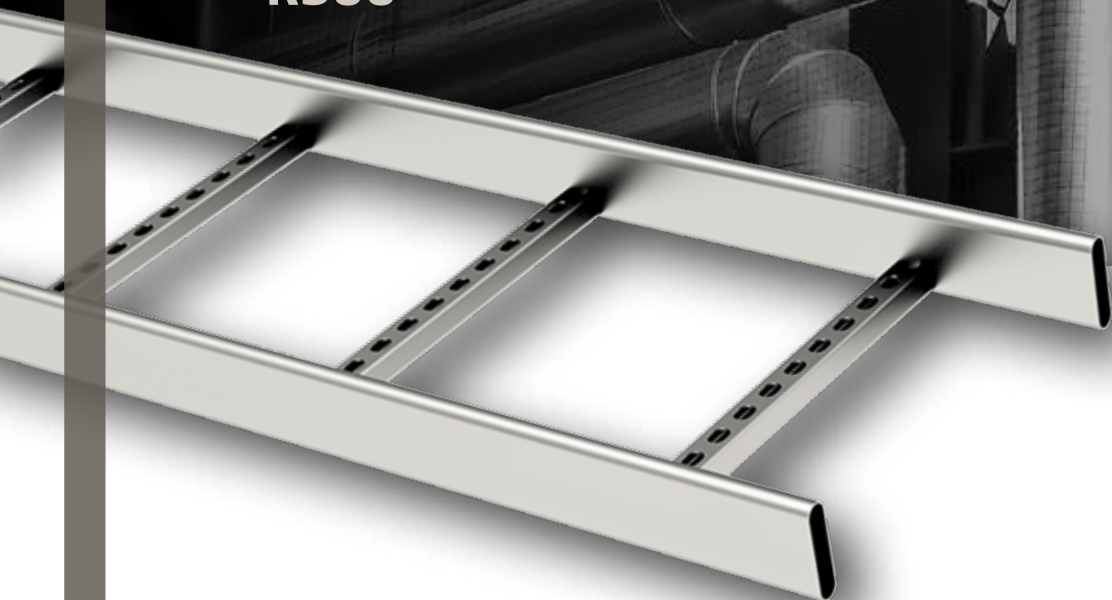




SOME SEE JUST A CABLE

WE SEE ONE WORLD CONNECTED






CABLE LADDERS FOR THE INDUSTRY
- KS80



SURFACE TREATMENTS AND CORROSION CATEGORIES

Selection of the required surface treatment on the basis of the prevailing ambient conditions.

SURFACE TREATMENT OPTIONS				
Marking	Surface treatment	Corrosion category	Galvanization standard	
EG (EZ) Electro-galvanized after manufacturing	Galvanized steel. Coating thickness 5-8 µm	C1, C2	EN ISO 2081	Electro-galvanizing refers to covering the product with a layer of zinc, using electricity. Electroplating is made in an electrolyte bath, after several cleaning and treatment stages.
PG Pre-galvanized steel	Galvanized steel. Coating thickness approximately 20 µm	C1, C2	EN 10346	Pre-galvanized steel products are made of zinc-coated steel bands. These products are also referred to as sendzimir galvanized products.
XPG Hot-dip galvanized, specially coated steel	Galvanized steel. Coating thickness approximately 20 µm	C1-C4	EN 10346	XPG products are made of zinc-based special alloy coated steel. The special mixture forms a thin and tight film on the coating, which improves corrosion protection. Corrosion protection is based on cathodic and mechanical protection.
HDG Hot-dip galvanized after manufacturing	Galvanized steel. Coating thickness approximately 55 µm	C3, C4	EN ISO 1461	Hot-dip galvanized products are made of steel and finished product, such as a whole cable ladder or a part of it, is pre-treated and dipped in molten zinc. These are also referred to as hot-dip zinc coated products. The zinc coating covers the entire product, including cutting edges and weld seams.
SS316 Acid-proof stainless steel, AISI 316L	Acid-proof steel AISI 316L	C4, C5	-	Products made of acid-proof stainless steel are used in highly corrosive environments, where hot-dip galvanizing does not provide sufficient corrosion protection.
M Painted steel	Painted steel. Standard colour white RAL 9010	C1, C2	-	Paint-coated steel products are made of pre-galvanized, painted steel band. The surface is covered with polyester paint, which has high resistance against weather, corrosion, and wear.
PURAL Painted steel	Pural coated steel Standard colour grey RAL 7045	C3, C4	-	Chemical consistency of Pural coating is optimized to tolerate weather conditions. Pural coating has high resistance against corrosion and UV radiation.

CORROSION CATEGORY				
Corrosion category	Usage outdoors	Usage indoors	Required surface treatment	Thickness reduction
C1 Very low 	Not for outdoor use.	Heated buildings with a clean atmosphere, such as offices, schools and hotels.	EG (EZ), PG, XPG, M	0,0 µm - 0,1 µm in a year
C2 Low 	Atmospheres with low contamination levels. Mostly rural areas.	Unheated buildings with possible condensation, such as warehouses and sports halls.	EG (EZ), PG, XPG, M	0,1 µm - 0,7 µm in a year
C3 Medium 	Urban and industrial atmosphere with medium sulphur dioxide levels. Coastal areas with low salinity levels.	Production premises with high humidity levels and some impurities in the air, such as food industry facilities.	XPG, HDG, PURAL	0,7 µm - 2,1 µm in a year
C4 High 	Industrial areas and coastal areas with medium salinity levels.	Chemical industry production plants, coastal shipyards and boatyards.	XPG, HDG, PURAL	2,1 µm - 4,2 µm in a year
C5-I, C5-M Very high (industrial) 	Industrial areas with high humidity levels and a corrosive atmosphere. Coastal and other areas with high salinity levels.	Buildings or areas with almost constant condensation and high contamination levels.	SS316	4,2 µm - 8,4 µm in a year

RECOMMENDED PRODUCTS		
C1 - C2	C3 - C4	C5-I, C5-M
Pre-galvanized PG and electro-galvanized EG products <ul style="list-style-type: none"> Cable ladders Cable trays Wire mesh trays Lighting tracks 	Hot-dip zinc coated HDG and Pural painted products <ul style="list-style-type: none"> Cable ladders Wire mesh trays Lighting tracks 	Acid-proof SS316 products <ul style="list-style-type: none"> Cable ladders Wire mesh trays Lighting tracks

EARTHING AND EQUIPOTENTIAL BONDING

Main equipotential bonding must be carried out in each building. The purpose of main equipotential bonding is to prevent the occurrence of dangerous voltage differences between conductive parts that may be touched at the same time.

In equipotential bonding, exposed conductive parts and other conductive parts are connected to the same potential, to eliminate potential differences between them.

Parts connected to the main equipotential bonding usually include the building's metal pipelines (HVAC), metal constructions, and, where applicable, the main reinforcing steels used in concrete constructions.

Metal cable support systems can also be regarded as structures to be included in the equipotential bonding.

Protective earthing/equipotential bonding

Cable ladders, cable trays and lighting tracks can be regarded as exposed conductive parts, which means that they must be connected to the building's main equipotential bonding rail at least at one point.

In industrial installations in particular, special attention must be paid to the earthing and reliability of the entire cable ladder system.

In industrial applications, it is recommended that the cable ladder be connected to earth at an interval of 40 m, for example, unless it is reliably connected to a conductive structure (e.g. an earthed steel column).

Extension piece SSR, which is used with cable ladder types KS20 and KS80, provides sufficient electrical connection, so a separate grounding conductor need not be installed across the ladder extension.

Electrical conductivity (cable ladders)	
Product	Impedance mΩ/m
KS20 PG	0,60
KS80 HDG	0,44
KS80 SS316	2,48
KSF80 HDG	0,44

Product + extension		Impedance mΩ/m
KS20-300 PG + NL PG		0,24
KS20-300 PG + SSR PG		0,13
KS20-300 PG + SSC PG		0,24
KS80-300 HDG + NL HDG		0,39
KS80-300 HDG + NL-TK HDG		0,26
KS80-300 HDG + SSR HDG		0,17
KS80-300 HDG + SSU HDG		0,14
SS316 KS80 + SS316 SSU		0,66
KSF80-300 HDG + M10 pultit		0,16
KSF80-300 HDG + KSF-NL HDG		0,30
Measured at 50 mm from the extension.		



Ceiling support HK2

Code	Product
1449633	HK2-300 HDG
1449635	HK2-500 HDG
1449637	HK2-750 HDG
1449640	HK2-1000 HDG

Side support ST

Code	Product
1449150	ST-300 HDG
1449151	ST-500 HDG
1449152	ST-800 HDG
1449153	ST-1500 HDG

Wall support VK

Code	Product
1449591	VK-200 2KN HDG
1449592	VK-300 2KN HDG
1449593	VK-400 2KN HDG
1449594	VK-500 2KN HDG
1449595	VK-600 2KN HDG

Wall support VK2

Code	Product
1449671	VK2 HDG

Coupling plate KL

Code	Product
1433437	KL-200 XPG
1433438	KL-300 XPG
1433439	KL-400 XPG
1433440	KL-500 XPG
1433441	KL-600 XPG

End bracket AF

Code	Product
1449679	AF HDG

Ceiling support TP2

Code	Product
1449610	TP2-500 HDG
1449613	TP2-1000 HDG
1449615	TP2-1500 HDG

Gate support TPK

Code	Product
1449492	TPK-200 HDG
1449493	TPK-300 HDG
1449494	TPK-400 HDG
1449495	TPK-500 HDG
1449496	TPK-600 HDG

Bottom plate POL

Code	Product
1433431	POL-200 XPG
1433432	POL-300 XPG
1433433	POL-400 XPG
1433434	POL-500 XPG
1433435	POL-600 XPG

Branching sheet AG

Code	Product
1449690	AG PG

Ceiling support TP1

Code	Product
1449602	TP1-500 HDG
1449604	TP1-1000 HDG
1449606	TP1-1500 HDG

Installation rail AS-WALL

Code	Product
1449208	AS WALL L=1980 HDG

Corner KS90

Code	Product
1449548	KS90-200 R=300 HDG
1449549	KS90-300 R=300 HDG
1449550	KS90-400 R=300 HDG
1449551	KS90-500 R=300 HDG
1449552	KS90-600 R=300 HDG

Wall support VKF

Code	Product
1449622	VKF-200 4KN HDG
1449623	VKF-300 4KN HDG
1449624	VKF-400 4KN HDG
1449625	VKF-500 4KN HDG
1449626	VKF-600 4KN HDG

Vertical bend cover KSV

Code	Product
1449452	KSV-200 HDG
1449453	KSV-300 HDG
1449454	KSV-400 HDG
1449455	KSV-500 HDG
1449456	KSV-600 HDG

Vertical bend cover KSVI

Code	Product
1432962	KSVI-200 HDG
1432963	KSVI-300 HDG
1432964	KSVI-400 HDG
1432965	KSVI-500 HDG
1432966	KSVI-600 HDG

Anchor rail ASR

Code	Product
1449660	ASR L=6030 HDG

Ceiling support ASR-TF

Code	Product
1449665	ASR-TF HDG

Protective cover KRL-KS

Code	Product
1433312	KRL-KS-200 L=3000 XPG
1433313	KRL-KS-300 L=3000 XPG
1433314	KRL-KS-400 L=3000 XPG
1433315	KRL-KS-500 L=3000 XPG
1433316	KRL-KS-600 L=3000 XPG

Curved protective cover KRL-KS90

Code	Product
1433327	KRL-KS90-200 R=300 XPG
1433328	KRL-KS90-300 R=300 XPG
1433329	KRL-KS90-400 R=300 XPG
1433330	KRL-KS90-500 R=300 XPG
1433331	KRL-KS90-600 R=300 XPG

Vertical bend cover KRL-KSV

Code	Product
1433389	KRL-KSV-200 XPG
1433390	KRL-KSV-300 XPG
1433391	KRL-KSV-400 XPG
1433392	KRL-KSV-500 XPG
1433393	KRL-KSV-600 XPG

Ceiling bracket RTF-10

Code	Product
1449652	RTF-10 HDG

Threaded rod GT-10

Code	Product
1449160	GT-10 L=2000 HDG

Intermediate support HK13

Code	Product
1449642	HK13-210 HDG
1449643	HK13-310 HDG
1449644	HK13-410 HDG
1449645	HK13-510 HDG
1449646	HK13-610 HDG

Extension piece SSU

Code	Product
1449670	SSU HDG

Bottom plate PPU

Code	Product
1432887	PPU-200 PG
1432888	PPU-300 PG
1432889	PPU-400 PG
1432890	PPU-500 PG
1432891	PPU-600 PG

Protective cover PSK

Code	Product
1433412	PSK-200 L=3000 XPG
1433413	PSK-300 L=3000 XPG
1433414	PSK-400 L=3000 XPG
1433415	PSK-500 L=3000 XPG
1433416	PSK-600 L=3000 XPG

T-piece cover KRL-KST

Code	Product
1433353	KRL-KST-200 R=300 XPG
1433354	KRL-KST-300 R=300 XPG
1433355	KRL-KST-400 R=300 XPG
1433356	KRL-KST-500 R=300 XPG
1433357	KRL-KST-600 R=300 XPG

T-piece cover KRL-KSX

Code	Product
1433379	KRL-KSX-200 R=300 XPG
1433380	KRL-KSX-300 R=300 XPG
1433381	KRL-KSX-400 R=300 XPG
1433382	KRL-KSX-500 R=300 XPG
1433383	KRL-KSX-600 R=300 XPG

X-piece KSX

Code	Product
1449577	KSX-200 R=300 HDG
1449578	KSX-300 R=300 HDG
1449579	KSX-400 R=300 HDG
1449580	KSX-500 R=300 HDG
1449581	KSX-600 R=300 HDG

Curved bracket CCA

Code	Product
1342003	CCA-22 PG
1342004	CCA-26 PG
1342005	CCA-30 PG
1342006	CCA-34 PG
1342007	CCA-40 PG

Vertical bend cover KRL-KSVI

Code	Product
1433395	KRL-KSVI-200 XPG
1433396	KRL-KSVI-300 XPG
1433397	KRL-KSVI-400 XPG
1433398	KRL-KSVI-500 XPG
1433399	KRL-KSVI-600 XPG

Bracket KK

Code	Product
1449676	KK HDG

Low voltage chute SR

Code	Product
1449701	SR-50 L=2000 PG
1449702	SR-100 L=2000 PG
1449703	SR-150 L=2000 PG

Protective cap AP

Code	Product
1449681	AP

Angle joint NL-TK

Code	Product
1449662	NL-TK HDG

T-piece KST

Code	Product
1449569	KST-200 R=300 HDG
1449570	KST-300 R=300 HDG
1449571	KST-400 R=300 HDG
1449572	KST-500 R=300 HDG
1449573	KST-600 R=300 HDG

Protective cover SK

Code	Product
1433422	SK-200 L=1550 XPG
1433423	SK-300 L=1550 XPG
1433424	SK-400 L=1550 XPG
1433425	SK-500 L=1550 XPG
1433426	SK-600 L=1550 XPG

Cover clip KAP

Code	Product
1449900	KAP HDG

Cable ladder KS80

Code	Product
1449522	KS80-200 L=6000 HDG
1449523	KS80-300 L=6000 HDG
1449524	KS80-400 L=6000 HDG
1449525	KS80-500 L=6000 HDG
1449526	KS80-600 L=6000 HDG



Scankab set out as the cable industry's answer to "garage rock"

From the outset in 1992, Scankab was the rebel of the cable industry. The business sold cables from a small garage store room and challenged the cable market.

Most recently, Scankab has made its mark as a front runner in fireproof cables (CPR).

Scankab develops, manufactures and supplies quality cables and cable management to electrical contractors, industry, marine & offshore, infrastructure and energy. The range includes more than 3,500 types of cables held in stock. Scankab's headquarter is based in Denmark in the western part of Funen and there are subsidiaries in Norway and Sweden.



**We believe in
direct communication**

Denmark

Phone +45 6343 1545
www.scankabsystems.dk

Sweden

Phone +46 (0)10-200 80 58
www.scankabsystems.se

